



You are here: [Home](#) > [Support](#) > [Windows](#) > [Dialup Settings](#)

Sonic.net Home

Services

For Home

For Business

Resources

Support

Live Help (Open)

Find Dialups

Web Mail

Member Tools

About Us

Contact Us

Search



Web Sonic.net

Search

Company

Sonic.net, Inc.
2260 Apollo Way
Santa Rosa, CA 95407

(707) 522-1000 Voice
(707) 547-2199 Fax
(707) 547-3400 Help

support@sonic.net

Partners



Dialup Settings

Categories

- [Getting to your Dialup Settings](#)
- [General Dialup Properties](#)
- [Dialup Options](#)
- [Dialup Security Settings](#)
- [Networking Settings](#)
 - [TCP/IP Settings](#)
 - [General Settings](#)
 - [DNS Settings](#)
 - [WINS Settings](#)
- [Advanced Options](#)

Screenshots

1. Getting to your Dialup Settings

- First, open your Start menu and select Control Panel.



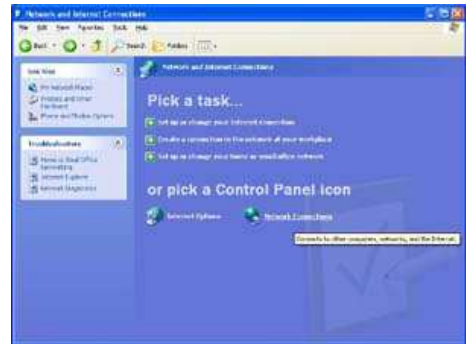
- Double-click "Network & Internet Connections." On some systems, this may be labeled simply "Network."



[View Full image](#)

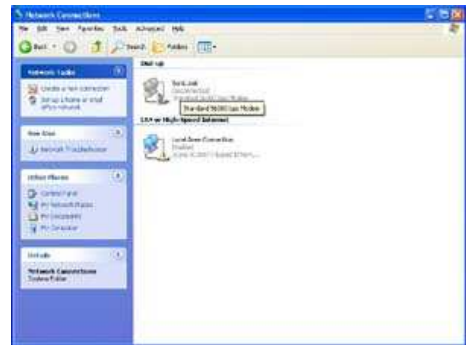


3. Double-click on "Network Connections."



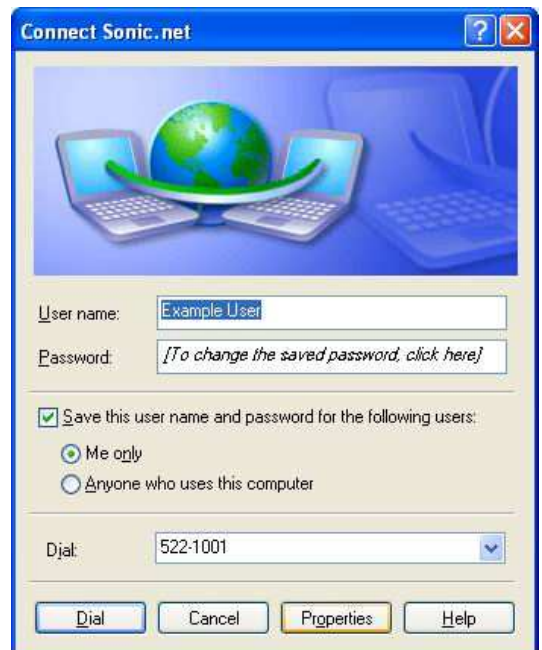
[View Full image](#)

4. Open your Sonic.net connection.



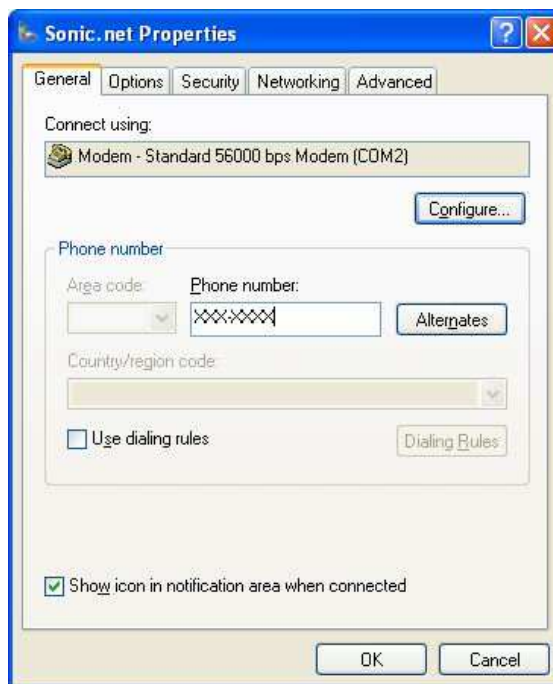
[View Full image](#)

5. To review or change your dialup settings, click the



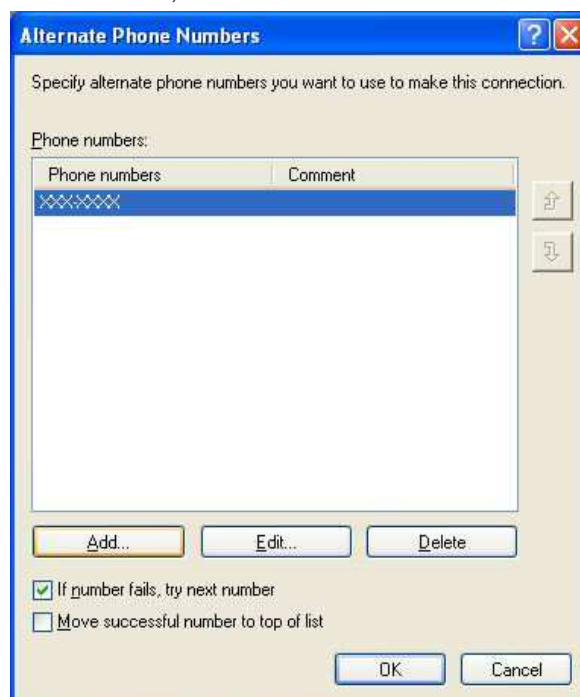
2. General Dialup Properties

Under the General tab you can specify the number you dial to reach Sonic.net. Sonic.net recommends configuring alternate numbers labeled "Alternates" to configure this..



◦ Alternate Numbers Listing

This screen will show you a listing of all dialup numbers your system knows how to connect to, in the order in which they will be used. In the event that the first number fails to connect, the second number will be dialed instead.

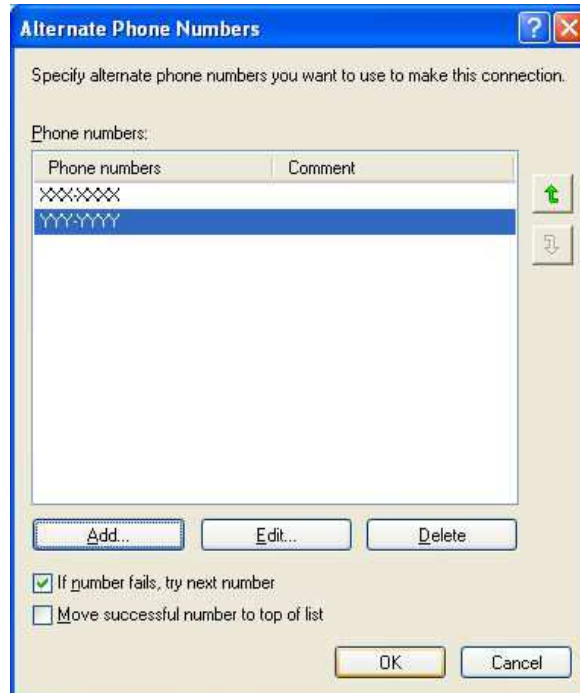


Click "add" to place another number on this list. There are multiple dialup points of presence available in most Sonic.net coverage areas. You can find a listing of access numbers in your area using the [POP Finder](#)



The "Add Alternate Phone Number" dialog box is shown. It has a title bar with a question mark and a close button. The main area is divided into sections. The "Phone number:" section contains an "Area code:" dropdown menu and a "Phone number:" text input field with a mask of "YY:YYM". Below this is a "Country/region code:" dropdown menu. There is a checkbox labeled "Use dialing rules:" which is currently unchecked. At the bottom of this section is a "Comment:" text input field. At the very bottom of the dialog are "OK" and "Cancel" buttons.

Click the button labeled "OK" and the new phone number will be added to your list.

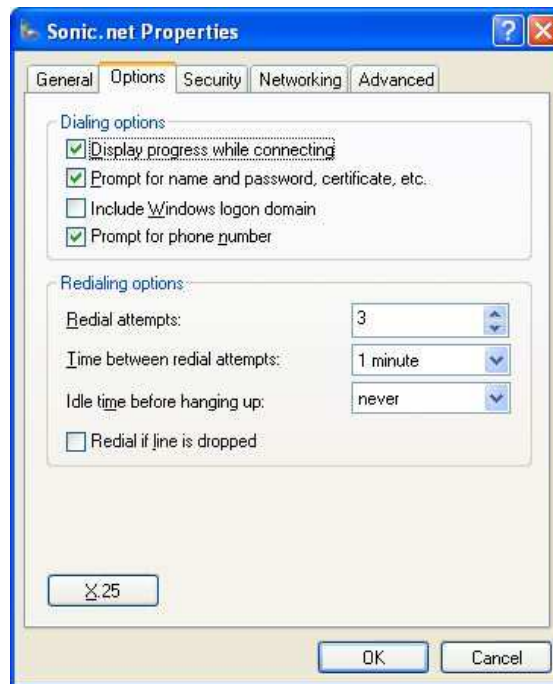


The "Alternate Phone Numbers" dialog box is shown. It has a title bar with a question mark and a close button. The main area contains the text "Specify alternate phone numbers you want to use to make this connection." Below this is a section titled "Phone numbers:" which contains a table with two columns: "Phone numbers" and "Comment". The table has two rows: the first row contains "XXXXXXXX" and the second row contains "YY:YYM". To the right of the table are two buttons: an up arrow and a down arrow. Below the table are three buttons: "Add...", "Edit...", and "Delete". At the bottom of the dialog are two checkboxes: "If number fails, try next number" (checked) and "Move successful number to top of list" (unchecked). At the very bottom are "OK" and "Cancel" buttons.

Click the button labeled "OK" to return to your General Dialup Properties.

3. Dialup Options

Under the Options tab, you can make primarily cosmetic changes to your system's behavior during dialup. Set the redial options as you please, as you should be able to connect to Sonic.net on your first attempt.



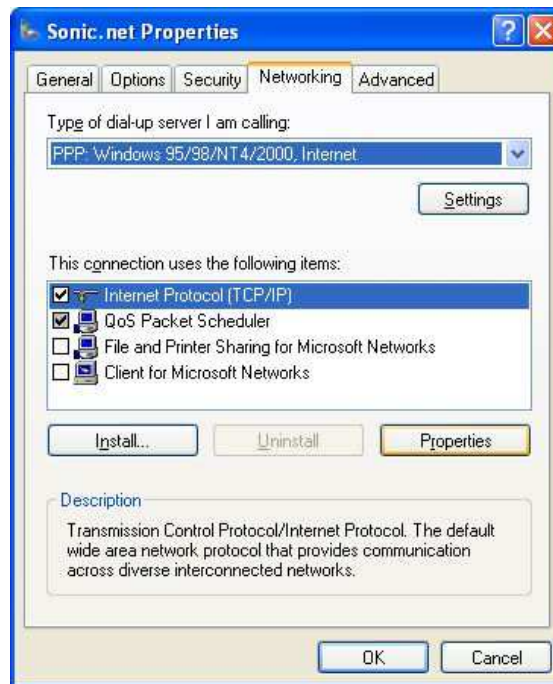
4. Dialup Security Settings

Under the Security tab, you can change how Windows handles your password and login scripting. Select "Typical (recommended settings)" and "Allow unsecured password." Leave all other checkboxes unmarked.



5. Networking Properties

Under the Networking tab, you should have "PPP: Windows 95/98/NT4/2000, Internet" selected as the type of dialup server you are calling. Select "Internet Protocol (TCP/IP)" and click the button labeled "Properties" for more network settings.



1. TCP/IP Settings

In the Internet Protocol Properties window, you should make certain that the IP address is being assigned automatically. You may wish to specify your DNS server addresses to use 208.201.224.11 and 208.201.224.33, but this is entirely optional. Click the button labeled "Advanced..." for more information.



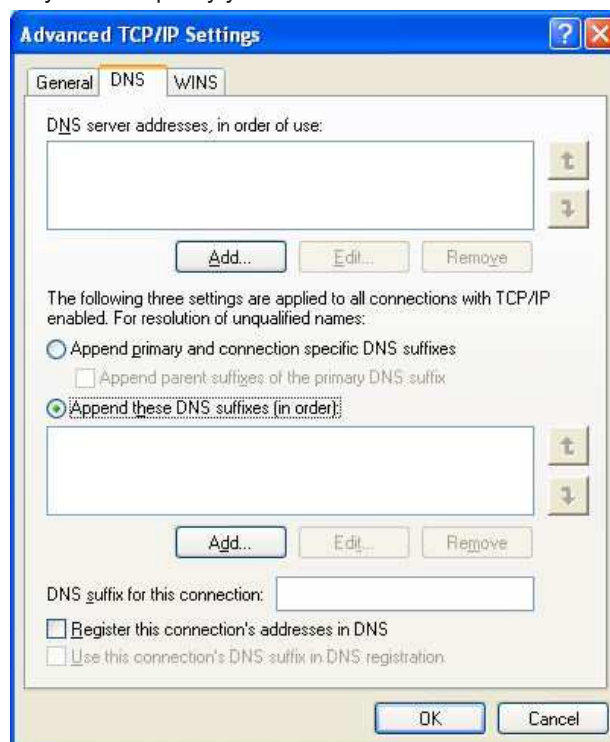
2. General Settings

Under the General tab, select both "Use default gateway on remote network" and "Use IP header compression."

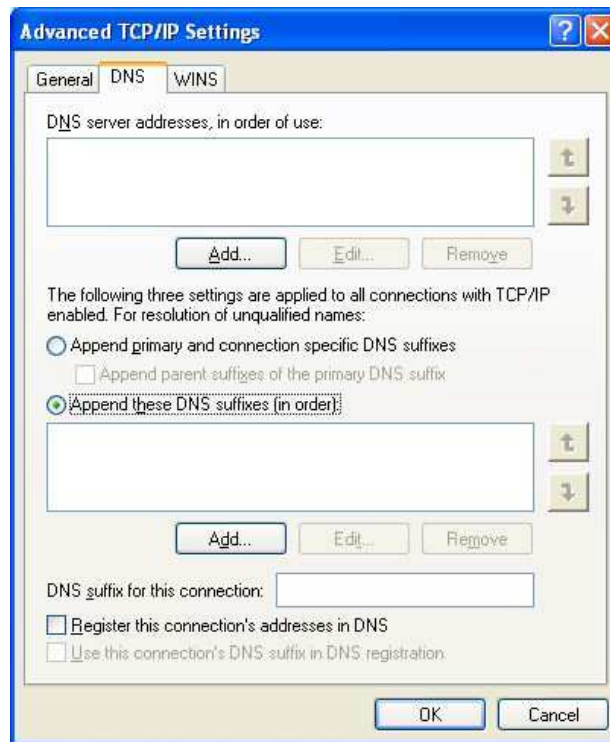


3. DNS Settings

The default settings for the DNS settings should function in most cases, but you may wish to specify your DNS information.

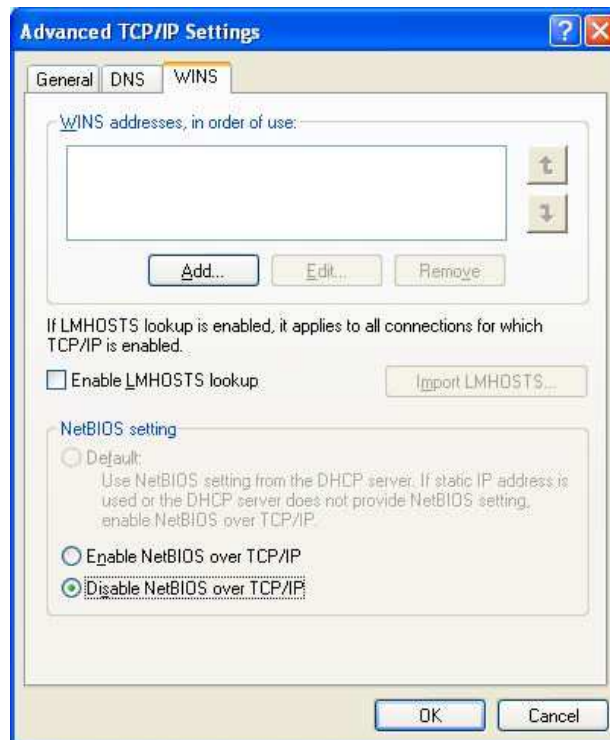


The DNS server addresses are 208.201.224.11 and 208.201.224.33. You can optionally append the DNS suffix "sonic.net."



4. WINS Settings

WINS resolution is unnecessary on a Sonic.net dialup connection.



6. Advanced Options

Here you can enable or disable the default Windows XP Firewall as well as internet connection sharing.



[Home](#) | [Sales](#) | [About Us](#) | [Jobs](#) | [Member Tools](#) | [Support](#) | [Web Mail](#) | [Find Dialups](#) | [Live Help](#) | [Contact Us](#)